

**CHRISTINE  
KRÖNCKE**  
INTERIOR  
DESIGN

# RYE 2025

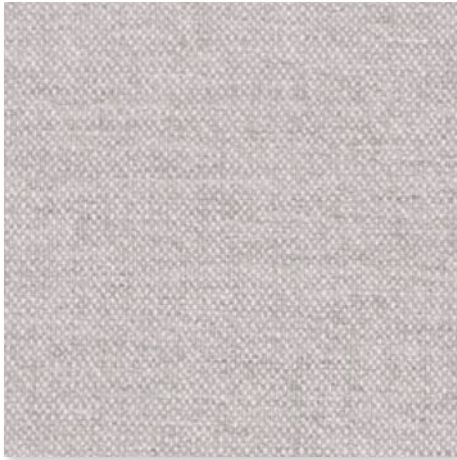
RYE 2025  
STOFF PREISGRUPPE 10

Möbelbezugsstoff RYE. Vielseitig einsetzbar und zeitlos im Design. Erhältlich in 15 aktuellen Farbtönen. Breite 140 cm.

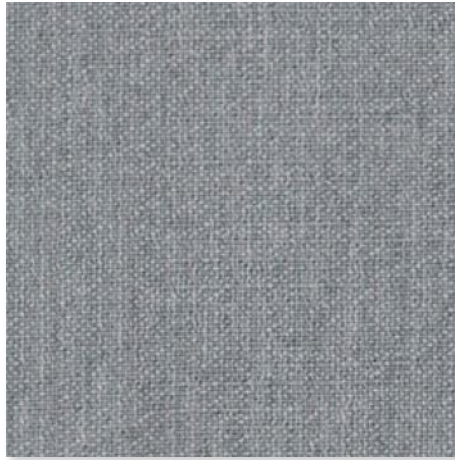
Upholstery fabric RYE. Versatile and timeless design. Available in 15 current colour tones. Width 140 cm.



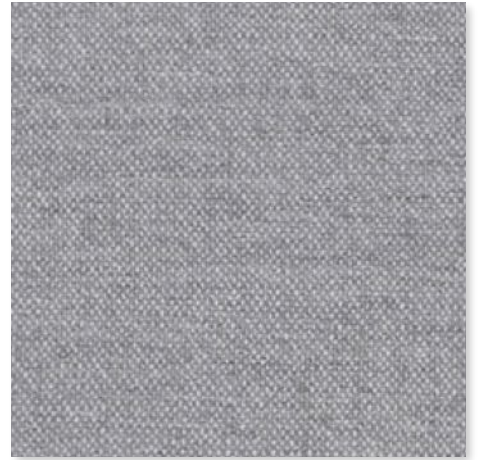
**RYE 2025  
GRUPPE 10**



**00 WEISS**  
RYE



**05 GRÜNGRAU**  
RYE



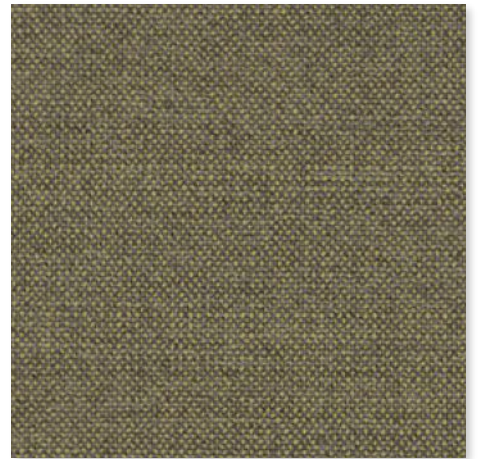
**08 SILBERGRAU**  
RYE



**48 GRAUBLAU**  
RYE



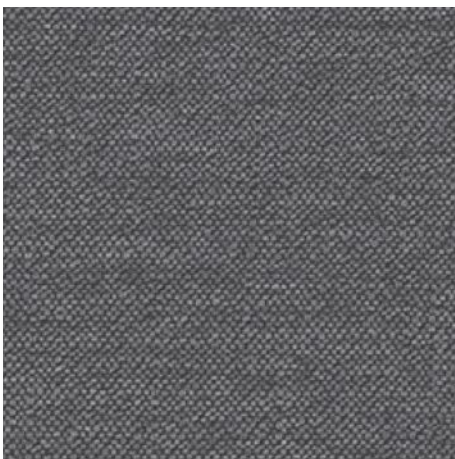
**50 GRÜN**  
RYE



**58 KIWI**  
RYE



**77 BRAUN**  
RYE



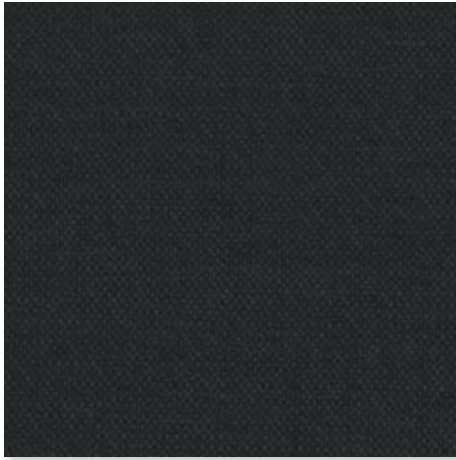
**78 TAUPE**  
RYE



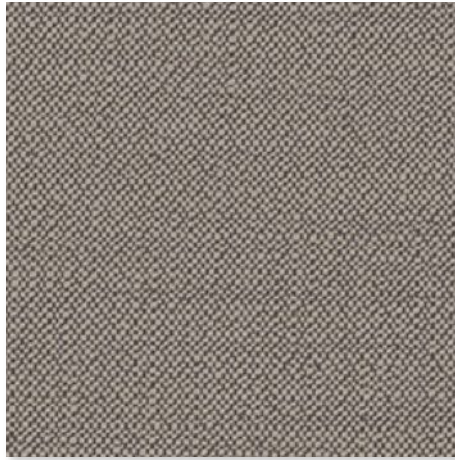
**84 DUNKELBLAU**  
RYE



## RYE 2025 GRUPPE 10



**88 ANTHRAZIT**  
RYE



**89 KITT**  
RYE



**90 HELLBEIGE**  
RYE



**93 STONE**  
RYE



**98 GRAU**  
RYE



**99 BEIGE**  
RYE

### RYE 2025

#### Zusammensetzung:

51% Polyester, 38% Polyacryl, 9% Baumwolle, 2% Polyamid

Breite: 140 cm

Scheuertouren: 90000

Lichtechtheit: 6

Schwer Entflammbar BS 5852 0

Pilling: 4

Chemische Reinigung: möglich. Empfehlung "schonend"

### RYE 2025

#### Composition:

1 51% Polyester, 38% Polyacrylic, 9% Cotton, 2% Polyamid

Fabric width: 140 cm

Rubs Martindale: 90000

Light fastness: 6

Flame retardant BS 5852 0

Pilling: 4

Dry cleaning: possible. Handle with care.