

**CHRISTINE
KRÖNCKE**
INTERIOR
DESIGN

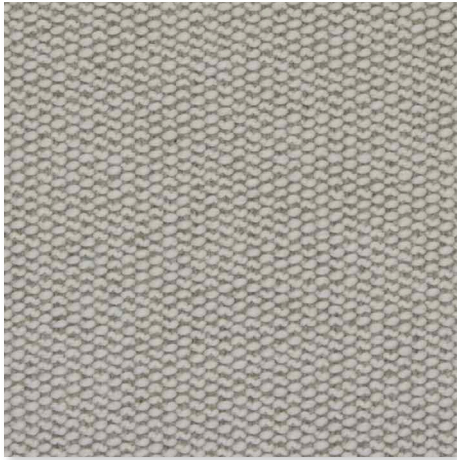
992022 PRAIRIE

992022 PRAIRIE
STOFF PREISGRUPPE 20

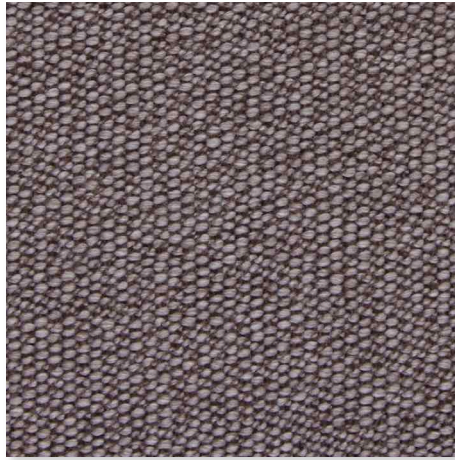
Möbelbezugsstoff PRAIRIE. Strapazierfähig und mit angenehm weicher Haptik. Erhältlich in 13 zeit-losen Farbtönen. Breite 140 cm.

Upholstery fabric PRAIRIE. Hard-wearing and with a pleasantly soft surface. Available in 13 timeless colour tones. Width 140 cm.

**992022 PRAIRIE
GRUPPE 20**



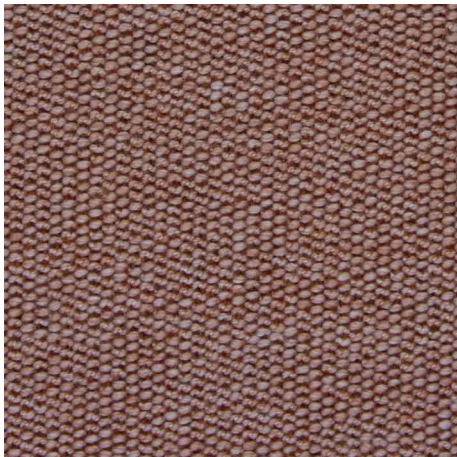
08 PEARL
PRAIRIE



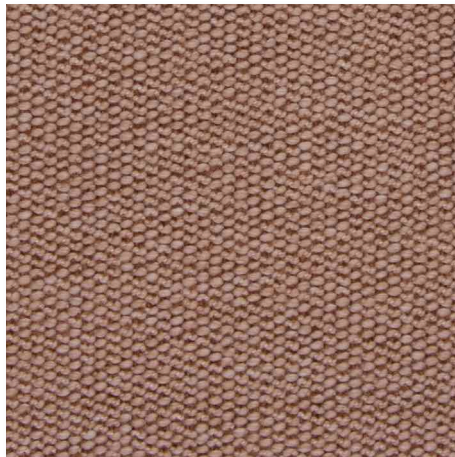
13 MULBERRY
PRAIRIE



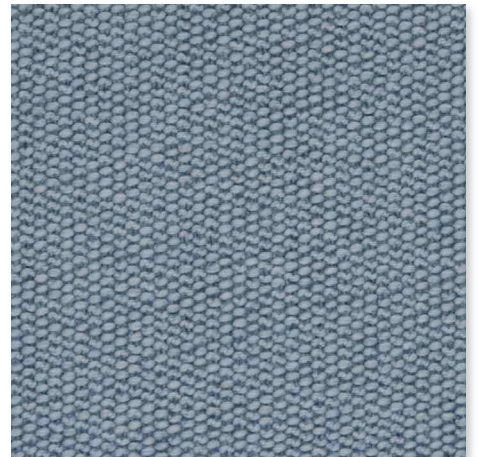
14 AUBERGINE
PRAIRIE



17 RUST
PRAIRIE



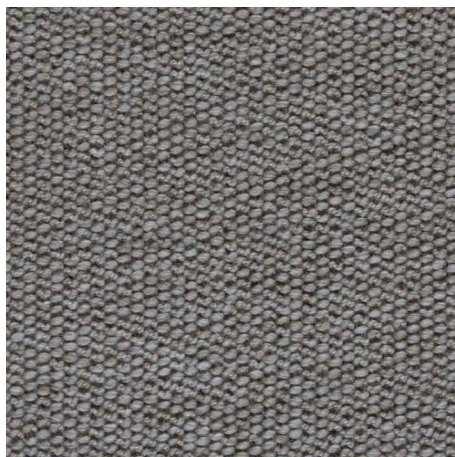
27 SANDELHOLZ
PRAIRIE



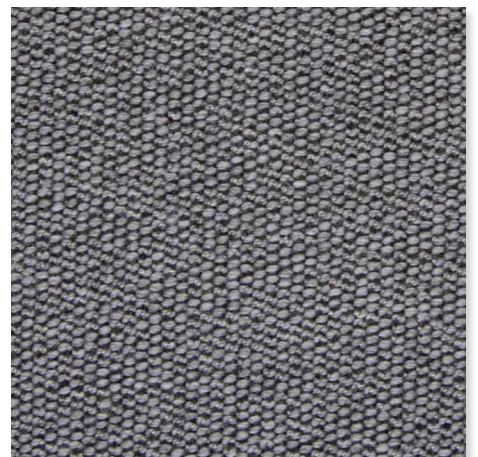
45 OCEAN
PRAIRIE



48 BLAU
PRAIRIE

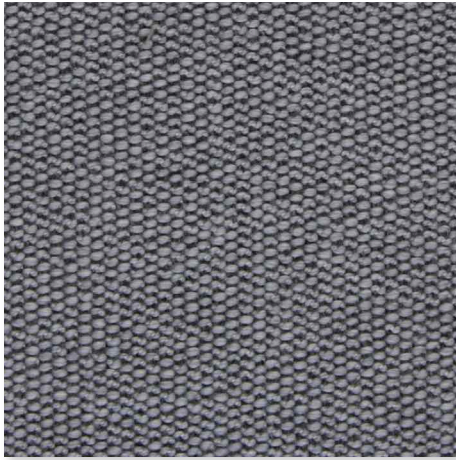


70 FANGO
PRAIRIE

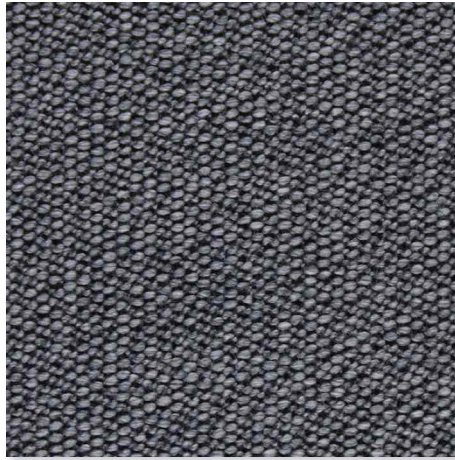


78 GRIGIO
PRAIRIE

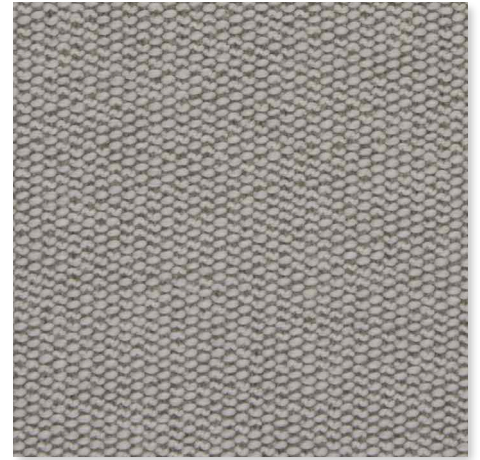
992022 PRAIRIE GRUPPE 20



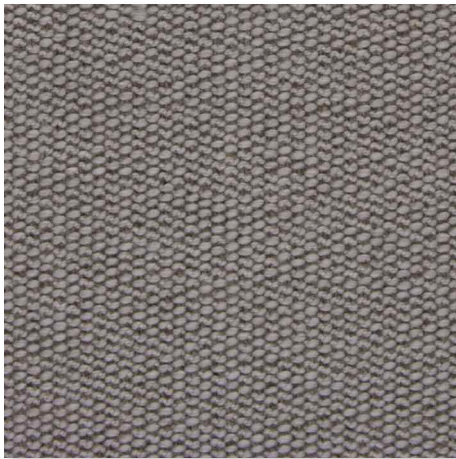
85 LIGHTGREY
PRAIRIE



88 CHARCOAL
PRAIRIE



95 KIESEL
PRAIRIE



98 KITT
PRAIRIE

LINK - CHRISTINE KRÖNCKE PFLEGEANLEITUNG
/ CARE INSTRUCTIONS

Ausschlaggebend für die mögliche Ausführung des entsprechenden Produktes, ist die jeweils aktuell gültige CHRISTINE KRÖNCKE Preisliste. The binding factor for the material availability, for any product, is the currently valid CHRISTINE KRÖNCKE price-list.

992022 PRAIRIE

Zusammensetzung:
40% Viscose
30% Polyester
25% Cotton
5% Polyamid

Breite: 140 cm

Scheuertouren: 90.000

Lichtechtheit: 5-6

Pilling: 4

Chemische Reinigung: möglich

992022 PRAIRIE

Composition:
40% Viscose
30% Polyester
25% Cotton
5% Polyamide

Fabric width: 140 cm

Rubs Martindale: 90.000

Light fastness: 5-6

Pilling: 4

Dry cleaning: possible

**CHRISTINE
KRÖNCKE**
INTERIOR
DESIGN

Die Materialien und Farben auf dieser Karte sind Reproduktionen und nicht farbverbindlich. Die Darstellung kann je nach Monitor variieren. The materials and colours are reproductions and intended as a guideline only. Their representation may vary depending on the monitor.
www.christinekroencke.net © 2019