

**CHRISTINE
KRÖNCKE**
INTERIOR
DESIGN

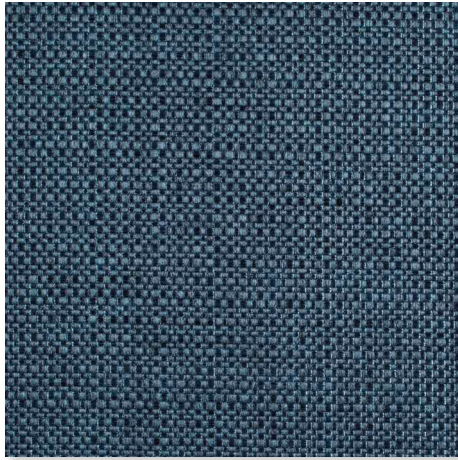
11282 MEMBER

11282 MEMBER
PREISGRUPPE 5

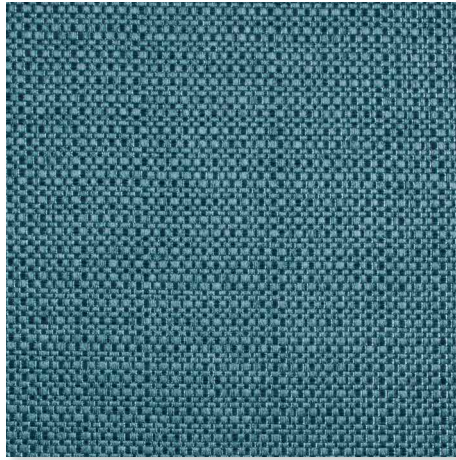
Möbelbezugsstoff MEMBER. Mischgewebe mit dezentem Design. Strapazierfähig mit angenehmer Haptik. Erhältlich in 13 aktuellen Farben. Breite 140 cm.

Upholstery fabric MEMBER. Blended fabric with a subtle design. Durable with a pleasant feel. Available in 13 current colours. Width 140 cm.

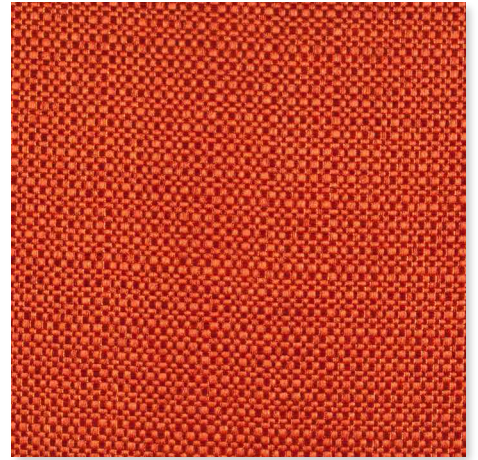
**11282 MEMBER
GRUPPE 5**



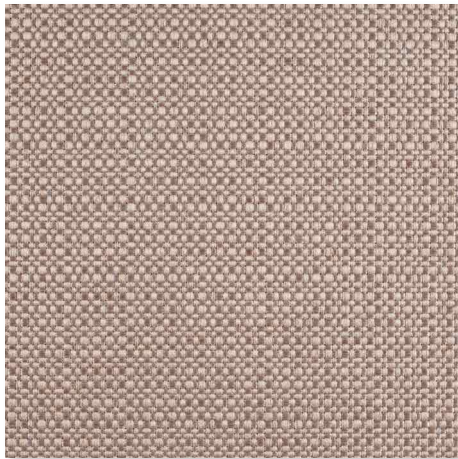
050 PRUSSIAN
MEMBER



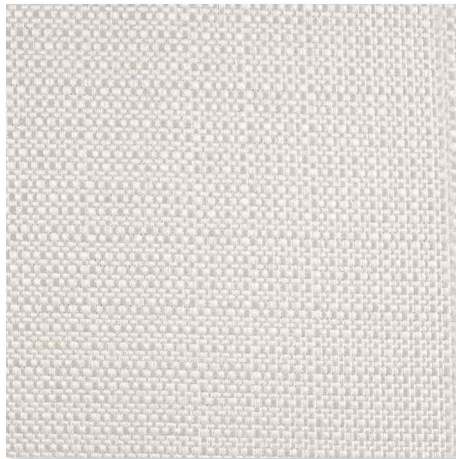
051 BALTIC
MEMBER



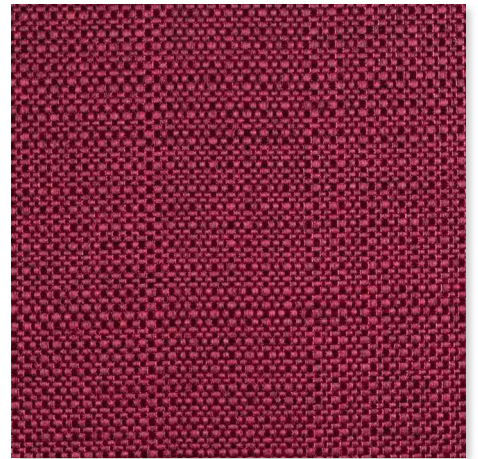
063 ORANGE
MEMBER



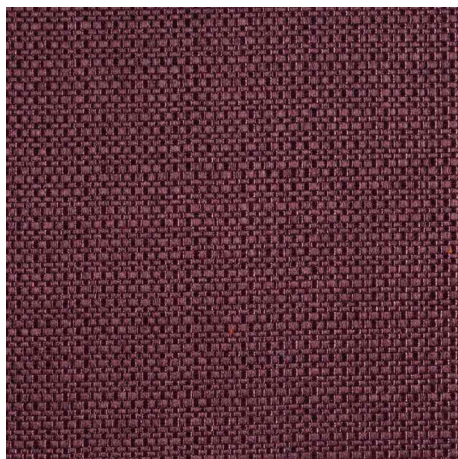
072 ALPACA
MEMBER



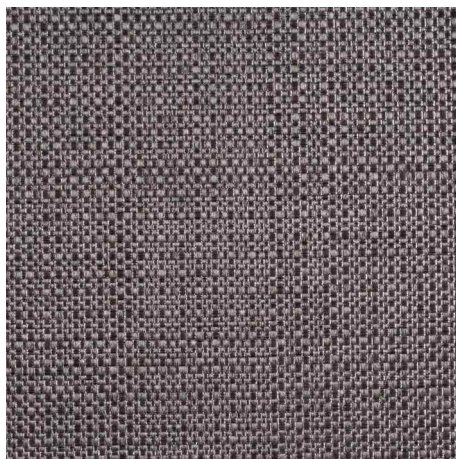
075 ECRU
MEMBER



081 CYCLAM
MEMBER



082 AUBERGINE
MEMBER



092 LEAD
MEMBER

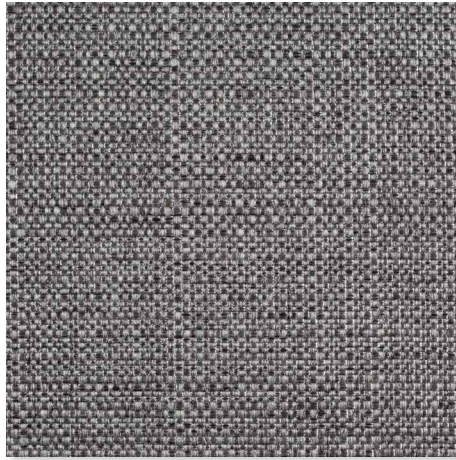


093 DARK
MEMBER

11282 MEMBER GRUPPE 5



094 SILVER
MEMBER



095 GRANITE
MEMBER



096 ASH
MEMBER



097 TERRA
MEMBER

LINK - CHRISTINE KRÖNCKE PFLEGEANLEITUNG
/ CARE INSTRUCTIONS

Ausschlaggebend für die mögliche Ausführung des entsprechenden Produktes, ist die jeweils aktuell gültige CHRISTINE KRÖNCKE Preisliste. The binding factor for the material availability, for any product, is the currently valid CHRISTINE KRÖNCKE price-list.

11282 MEMBER

Zusammensetzung:
Nutzschicht 100% Polyester
Grundsicht 90% Polyester, 10% Baumwolle

Breite: 140 cm

Scheuertouren: 100.000

Lichtechtheit: 5

Pilling: 5

Chemische Reinigung: möglich

11282 MEMBER

Composition:
Surface 100% Polyester
Base 90% Polyester, 10% Baumwolle

Fabric width: 140 cm

Rubs Martindale: 100.000

Light fastness: 5

Pilling: 5

Dry cleaning: possible

11282 MEMBER GRUPPE 5

Wichtiger Hinweis zur Stoffqualität / Important Material Information

Sichtbare Verdickungen im Flor des Materials ist eine warentypische Eigenschaft dieses Stoffes. Es ist kein Mangel und kein Grund zur Reklamation.

Visible thickenings in the pile of this material are possible. It is a typical sign of this fabric. It is not a quality issue and no reason for complaints.

