

1108

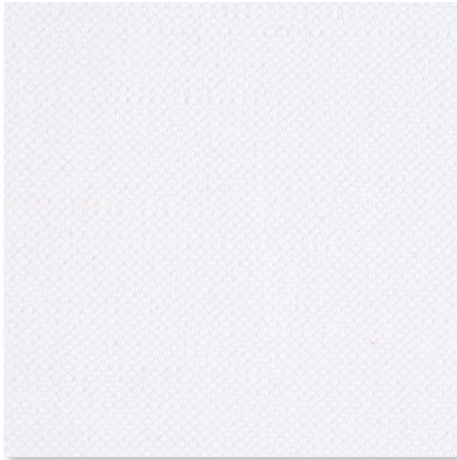
DJAKARTA

1108 DJAKARTA
STOFF PREISGRUPPE 5

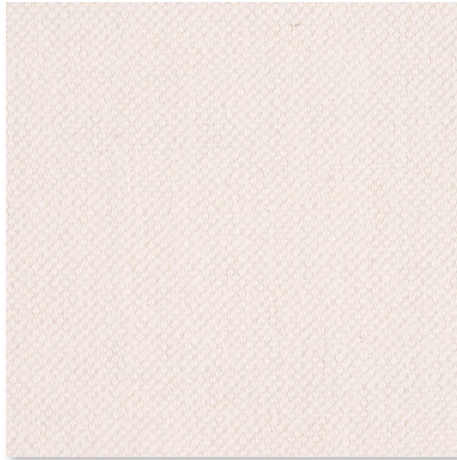
DJAKARTA ist ein flaches Baumwolle-Leinen Gewebe in einer besonders festen Bindung. Dadurch wird DJAKARTA zu einem sehr strapazierfähigen Bezugsstoff aus rein natürlichen Materialien. Die Oberfläche erhält durch die besondere Zusammensetzung aus 63% Baumwolle und 37% Leinen einen fast samtigen Griff. Die umfangreiche Farbpalette lässt fast jede Farbkombination zu.

DJAKARTA is a flat cotton-linen fabric in a particularly strong binding. This makes DJAKARTA an extremely hardwearing product for upholstery made of purely natural materials. The special mixture of 63% cotton and 37% linen gives the surface of the fabric an almost velvet-like feel. The wide range of different colour-shades allows almost any combination possible.

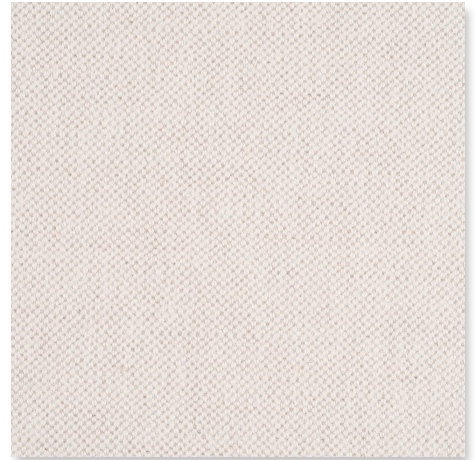
**1108 DJAKARTA
GRUPPE 5**



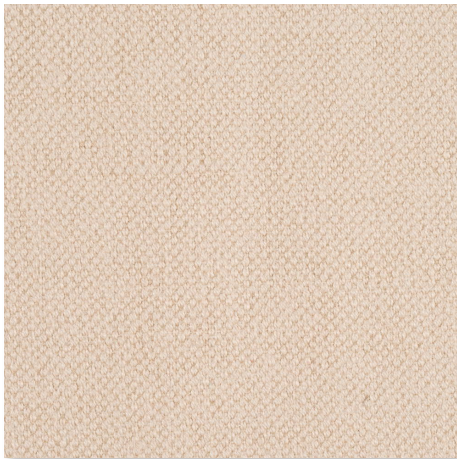
01 BIANCO
1108 DJAKARTA



03 ÉCRU
1108 DJAKARTA



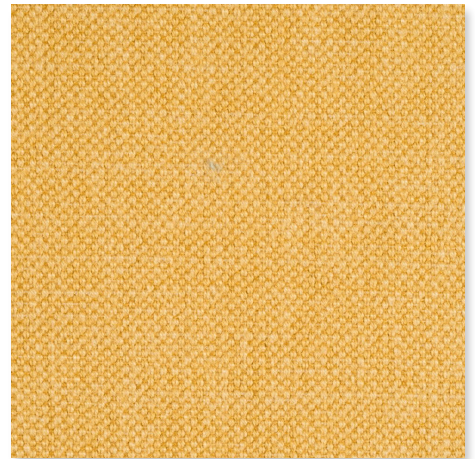
05 DESSERT
1108 DJAKARTA



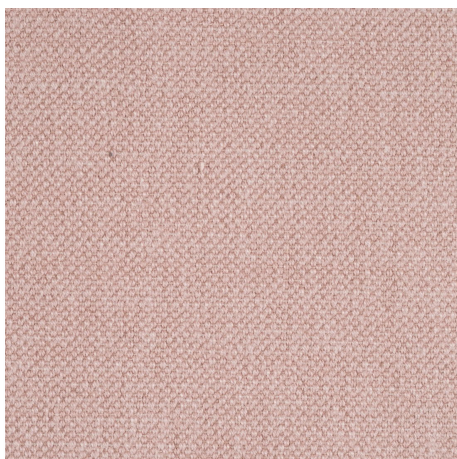
06 COUNTRY
1108 DJAKARTA



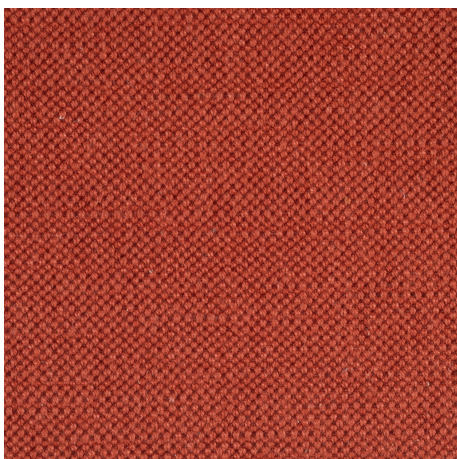
07 SAND
1108 DJAKARTA



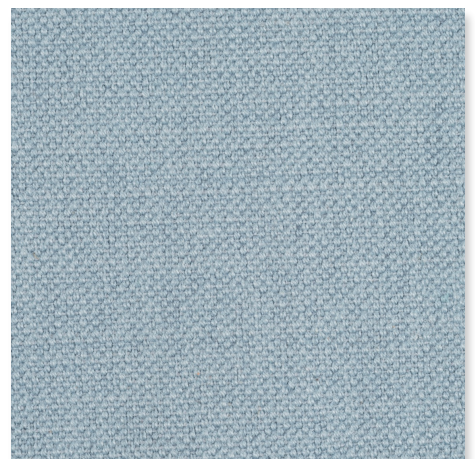
11 SENF
1108 DJAKARTA



21 BEIGEROSÉ
1108 DJAKARTA

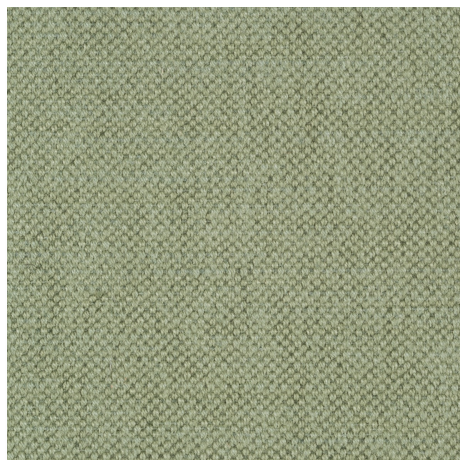


28 BRIQUE
1108 DJAKARTA

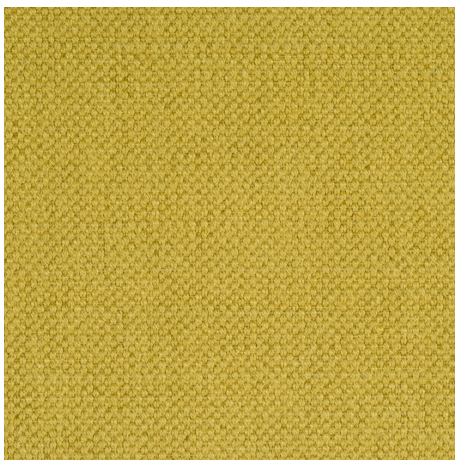


35 AZUR
1108 DJAKARTA

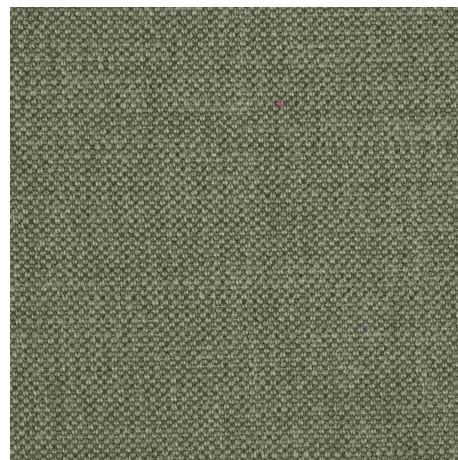
1108 DJAKARTA GRUPPE 5



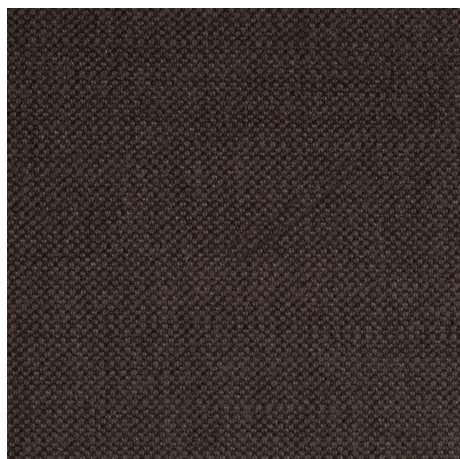
40 LINDGRÜN
1108 DJAKARTA



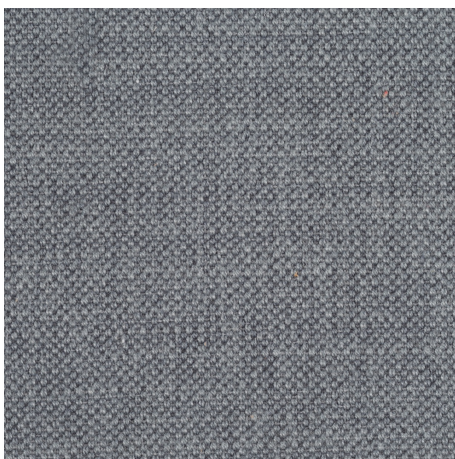
45 GRÜN
1108 DJAKARTA



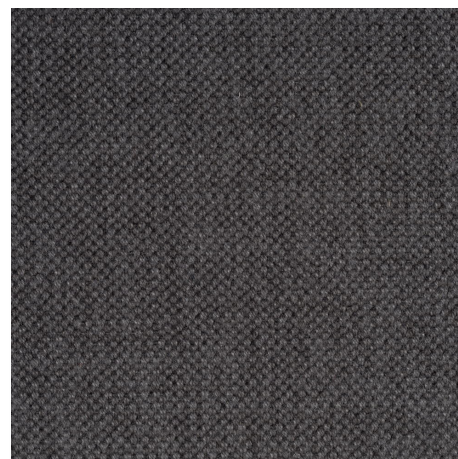
49 HEU
1108 DJAKARTA



59 MARRON
1108 DJAKARTA



60 ASPHALT
1108 DJAKARTA



68 GRAPHIT
1108 DJAKARTA

1108 DJAKARTA

Zusammensetzung:
63% Baumwolle CO
37% Leinen LI

Breite: 140 cm

Scheuertouren: 32.500

Lichtechtheit: 3 - 5

Reibechtheit: 3 - 5

Pilling: 4

Chemische Reinigung: möglich

1108 DJAKARTA

Composition:
63% Cotton CO
37% Linen LI

Fabric width: 140 cm

Rubs Martindale: 32.500

Light fastness: 3 - 5

Fastness to rubbing: 3 - 5

Pilling: 4

Dry cleaning: possible